



AI That Verifies Construction Worker Competency

Martin Kalamees, CEO
Marion Kallakas, COO

www.werk.eu

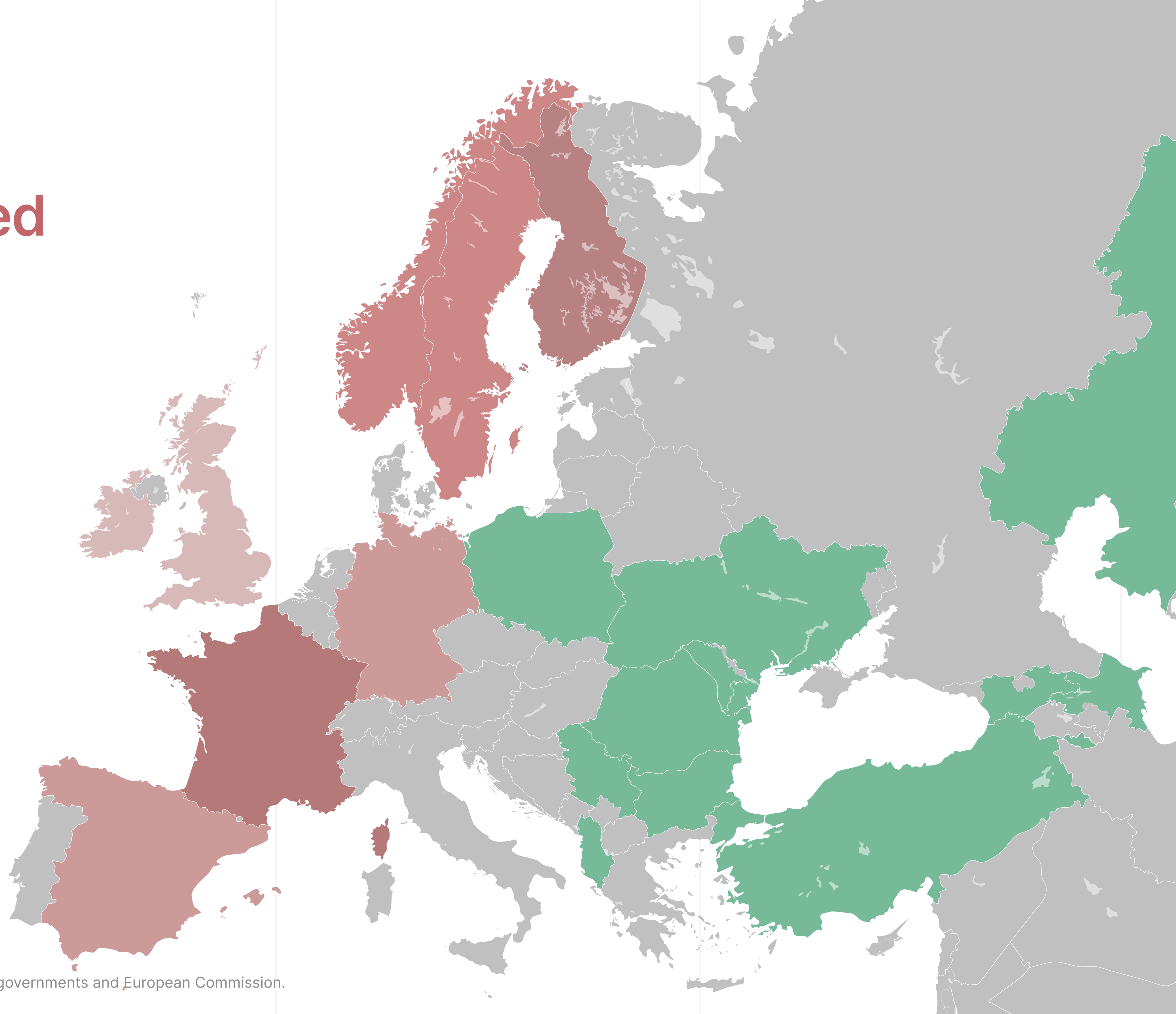


Werk

Misallocation Of Skilled Labour in Europe

16M workers
in European construction.

40%
of the workforce today is migrant.¹



1. In metropolitan areas across Western Europe and Scandinavia according to governments and European Commission.

Werk

By 2030, Europe Is Missing 3M Construction Workers



Already today there are **2 job openings** for every **available worker**.

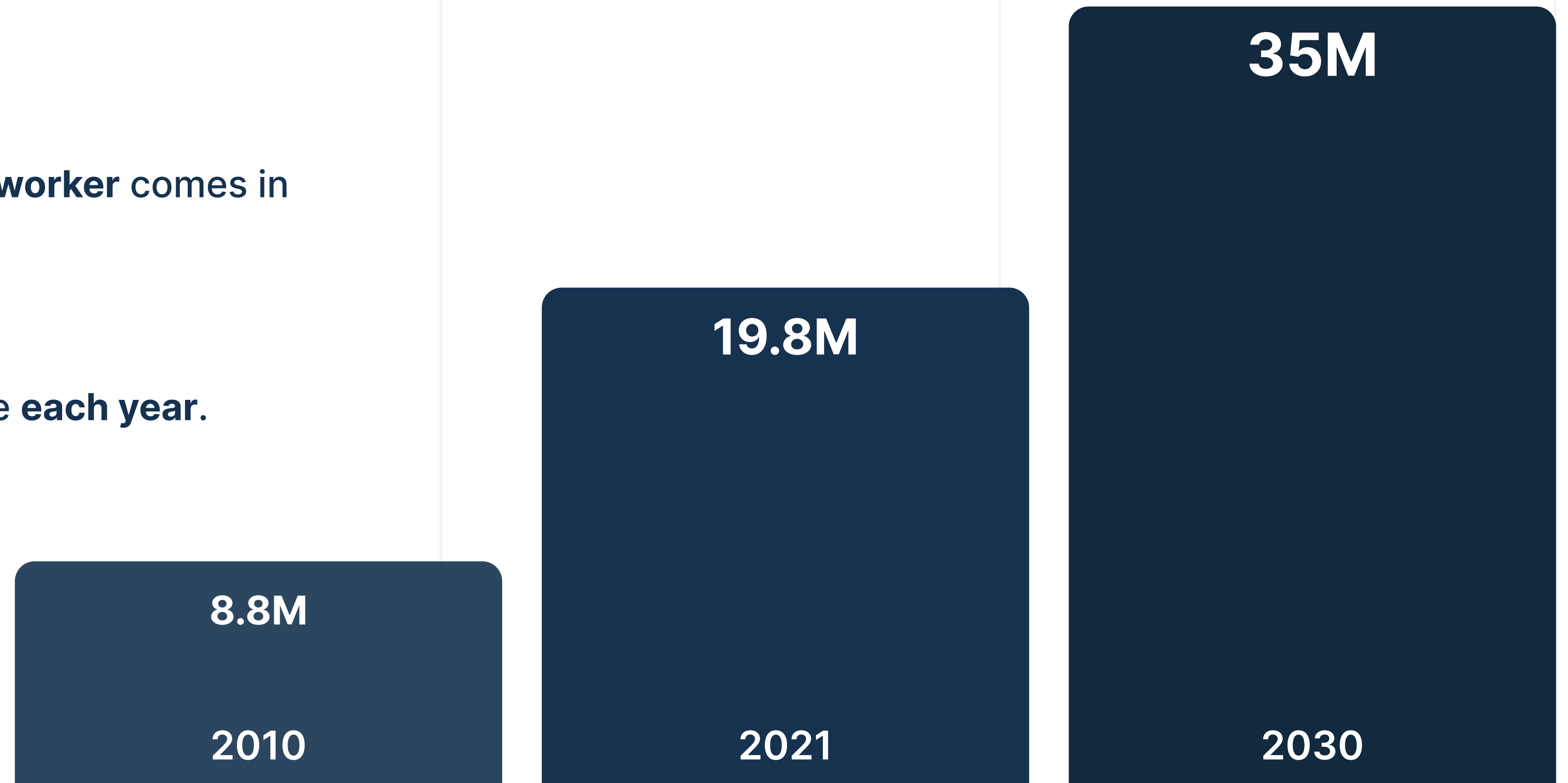


For every 3 workers that retire, only **1 worker** comes in to **replace** them.



600K migrants entering the workforce each year.

Growth of Migrant Workers in Europe ²



1. European Federation of Building and Woodworkers [report 2023](#).

2. European Commission [statistics on migration in Europe 2022](#)

Werk

Work Migration In Blue-Collar Is Broken



Market is dominated by employment agencies that are mostly 1-5 person middlemen, largely responsible for the grey economy.



The current matching success rate for skilled jobs is less than 30% due to poor skills verification.



Workers move between projects every 3 months and even changing employers & countries, just like in gig-economy.



Werk

Werk uses AI to assess and match blue-collar migrants to jobs globally

Performance

My score

79% Top performer

Reading The Blueprints

84%

Marking of Dimensions

90%

Building the Frame for Walls

50%

Building Odd Structures

100%

Installing Hatches

10%

General Material Knowledge

20%

Tool Usage

98%



Werk

Precise Competency Data Enables Skill Matching for Specific Job Requirements Across Borders

Language agnostic AI

Ensuring the accuracy of assessment regardless of the workers' language

300% more accurate

than traditional employment agencies manual vetting which relies on CVs.

>20 000

workers signed-up from 12 different nationalities in just 3 months.

John McClane

79%

Reading Blueprints



100%

Tool-based knowledge



100%

Framing & Insulation



90%

Drywall installation



80%

Strong candidate for crew leader role because of high blueprint reading skills.

Hans Gruber

64%

Reading Blueprints



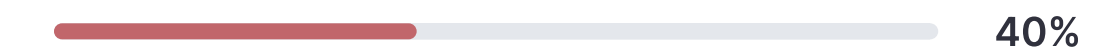
20%

Tool-based knowledge



100%

Framing & Insulation



40%

Drywall installation



90%

 1 critical mistake

Excellent part of any crew. Strong drywalling and tooling knowledge.

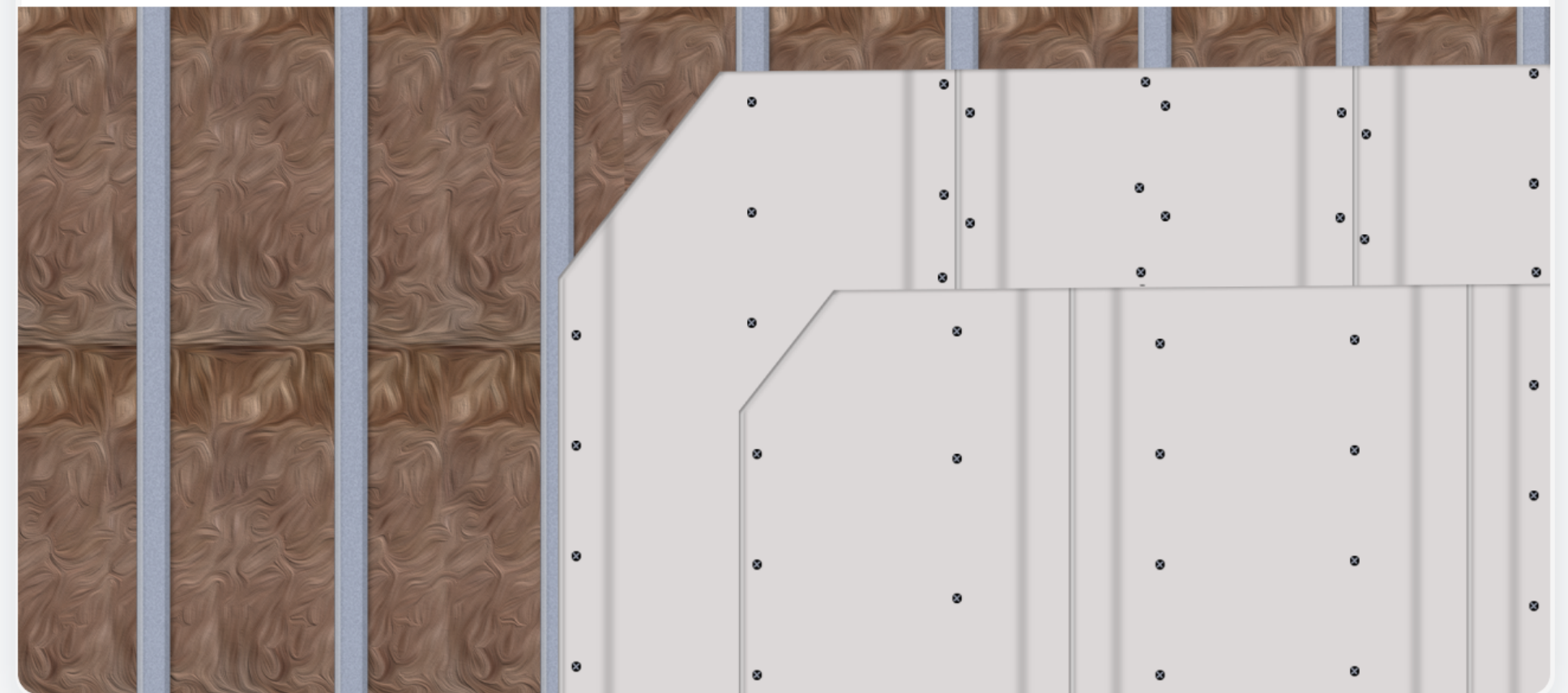
Tests follow the actual building process

Logic questions

How many mm is 0.46m?

Trade questions

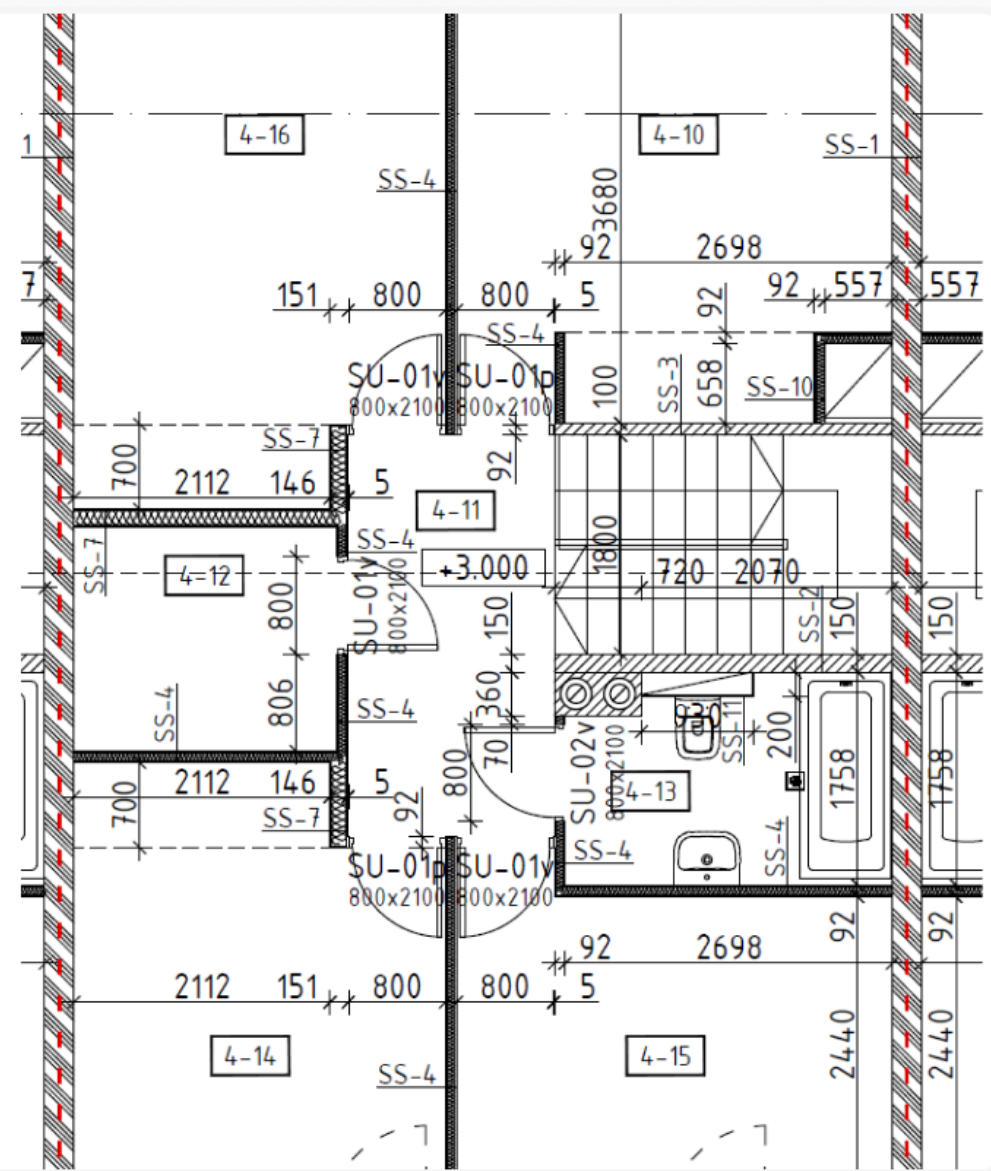
Is the second layer of drywall installed correctly?



Built together with site-managers

Blueprint questions

What is the width of wall type SS-4?



Werk

Situation & Video Questions

You arrive on a new worksite, it's apartment building. Your first task is to start with the metal framing for the drywall. Your superior gives you all the tools you need and the materials are also there. But something tells you that there is underfloor heating installed in the building.

How do you proceed?

Werk

Werk

Timpul rămas pentru această întrebare

1:32

Întrebare 4 din 12

Al doilea strat de gips-carton este instalat corect?



Răspunsul dumneavoastră

Introduceți răspunsul dvs. aici

Salvați și continuați

Performance

My score

79%

Top performer

Reading The Blueprints

84%

Marking of Dimensions

90%

Building the Frame for Walls

50%

Building Odd Structures

100%

Installing Hatches

10%

General Material Knowledge

20%

Tool Usage

98%

Labour Shortage Crisis Is Imminent

Blue-collar workforce is aging

No younger generation is coming in to replace them. In 2000, 12% of European blue-collar workers were under 25 years old. In 2022, that number fell to 7%.

→ **75% of European buildings need to be renovated**

By 2040, half the existing building stock will have to be renovated to low-carbon standards (GIEC).

→ **3M new construction workers needed in Europe**

Already today 40% of the workforce is migrant.

WE ARE ALREADY PARTNERS TO



SKILLS FOR A
SUSTAINABLE
SKYLINE

Werk

Digital Work Passport for Blue-Collar



Standardise workers competency cross-border.



Know 1000x more about the workers than today.



Access paperwork and compliance data.



Andrei Kobalnik

Drywall Ltd

Current location

+ Helsinki, Finland

Passport

Ukrainian

Skills

House builder, Drywaller

Languages

Russian, English

Documents

✓ A1 Form (Estonia)
Expires in 22.08.2025

✓ Valti Card
Expires in 11.01.2024

⚠ Tax Number
Expired in 01.01.2023

Certificates

✓ Waterproofing Card
Expires in 01.01.2025

⚠ Fire Work Card
Missing

✓ First Aid Manager
Expires in 01.01.2025

Competency

79

Drywalling Score

11.01.2023

82

Safety Training

11.01.2023

64

Site Induction

15.01.2023

Werk

Werk

Thank you!



Martin Kalamees
CEO



Marion Kallakas
COO